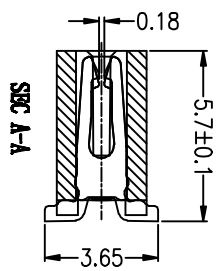
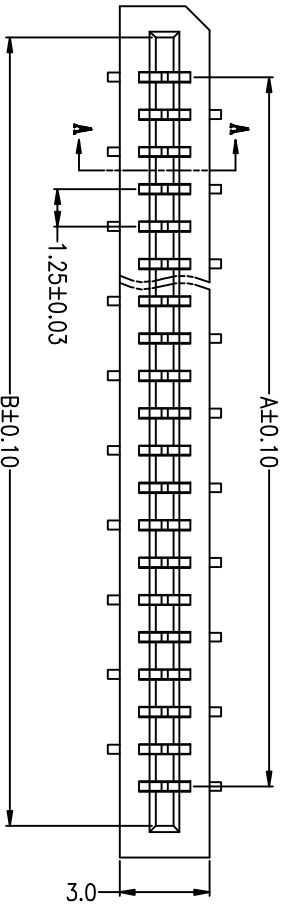
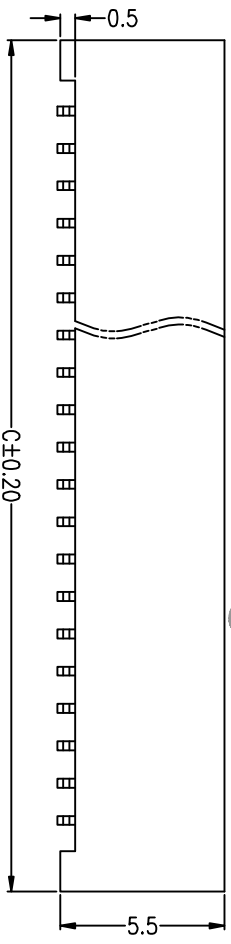


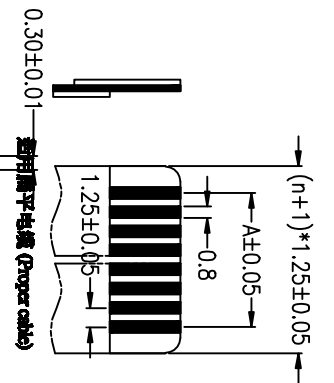
Pin No.	1	2	3	4	5	6	7
4P	3.75	6.40	8.80				
5P	5.00	7.65	9.75				
6P	6.25	8.90	11.00				
7P	7.50	10.15	12.25				
8P	8.75	11.40	13.50				
9P	10.00	12.65	14.75				
10P	11.25	13.90	16.00				
11P	12.50	15.15	17.25				
12P	13.75	16.40	18.50				
13P	15.00	17.65	19.75				
14P	16.25	18.90	21.00				
15P	17.50	20.15	22.25				
16P	18.75	21.40	23.50				
17P	20.00	22.65	24.75				
18P	21.25	23.90	26.00				
19P	22.50	25.15	27.25				
20P	23.75	26.40	28.50				
21P	25.00	27.65	29.75				
22P	26.25	28.90	31.00				
23P	27.50	30.15	32.25				
24P	28.75	31.40	33.50				
25P	30.00	32.65	34.75				
26P	31.25	33.90	36.00				
27P	32.50	35.15	37.25				
28P	33.75	36.40	38.50				
29P	35.00	37.65	39.75				
30P	36.25	38.90	41.00				
31P	37.50	40.15	42.25				
32P	38.75	41.40	43.50				
33P	40.00	42.65	44.75				
34P	41.25	43.90	46.00				
35P	42.50	45.15	47.25				
36P	43.75	46.40	48.50				
37P	45.00	47.65	49.75				
38P	46.25	48.90	51.00				
39P	47.50	50.15	52.25				
40P	48.75	51.40	53.50				



www.szjusun.cn



安装示意图



正针 PCB 寸法  
Positive needle PCB layout

反针 PCB 寸法  
Versa needle PCB layout

- 技术参数 (SPECIFICATIONS)
- ◆ 规格: 4~40 Poles 4~40
- ◆ 额定电压: AC/DC 200V (SEIZ/有效值)
- ◆ 额定电压: AC/DC 50V (200HZ)
- ◆ 额定电流: 0.5A, AC/DC
- ◆ 额定电压: 0.5A, AC/DC
- ◆ 额定电压: 500V AC/minute
- ◆ 额定电压: 500V AC/minute
- ◆ 工作温度: -25°C~+85°C
- ◆ 绝缘电阻: >800 MΩ
- ◆ 接触电阻: <0.02 Ω
- ◆ 接触电阻: <0.02 Ω
- ◆ 表面处理: Dual Contact
- 接触件 (TERMINAL)
- ◆ 材质: 磷青铜
- ◆ Material: Phosphor Bronze
- 塑胶本体 (HOUSING)
- ◆ 材质: 尼龙, UL94V-0
- ◆ Material: Nylon, UL94V-0
- 包装方式 (PACKAGE)
- ◆ 管装 Pipe Package
- ◆ 盒装 Box Package

		<b>钜赛实业(深圳)有限公司</b> JUSAI INDUSTRIAL (SHENZHEN) CO.,LTD		<b>TITLE:</b> 1.25-E-nPB	
<b>USE:</b> MAT'L	<b>APPD:</b> FINISH	<b>CHEKD:</b>	<b>DR:</b>	<b>PART NO.:</b>	<b>SCALE:</b> 1:1
<b>SCALE:</b> 1:1	<b>SHEET:</b> 1/1	<b>REV.:</b> XI			

REV	DESCRIPTION	WORK
XI	First edition	