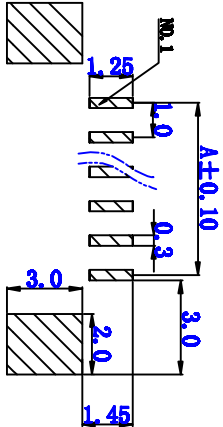
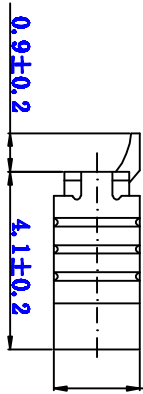
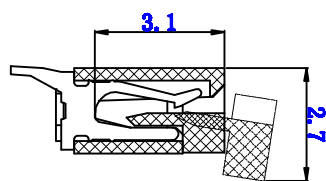
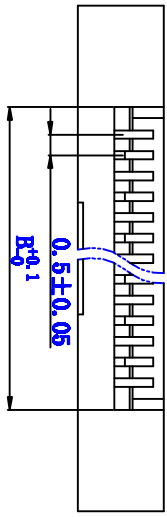
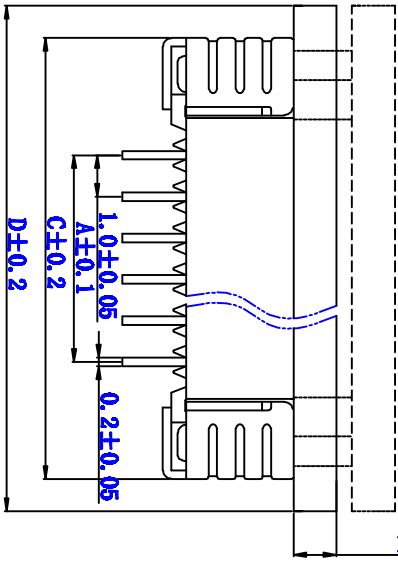


REV	DESCRIPTION	DATE
XI	First edition	

www.szjusun.cn



PCB Layout

性能:
 额定电流: 0.5A
 额定电压: 50V AC, DC
 耐电压: 200V
 接触电阻: 30mΩ
 绝缘电阻: 500MΩ
 工作温度: -20℃~+85℃

孔位	A	B	C	D
2	1.00	3.10	6.85	8.02
3	2.00	4.10	7.85	9.02
4	3.00	5.10	8.85	10.02
5	4.00	6.10	9.85	11.02
6	5.00	7.10	10.85	12.02
7	6.00	8.10	11.85	13.02
8	7.00	9.10	12.85	14.02
9	8.00	10.10	13.85	15.02
10	9.00	11.10	14.85	16.02
11	10.00	12.10	15.85	17.02
12	11.00	13.10	16.85	18.02
13	12.00	14.10	17.85	19.02
14	13.00	15.10	18.85	20.02
15	14.00	16.10	19.85	21.02
16	15.00	17.10	20.85	22.02
17	16.00	18.10	21.85	23.02
18	17.00	19.10	22.85	24.02
19	18.00	20.10	23.85	25.02
20	19.00	21.10	24.85	26.02
21	20.00	22.10	25.85	27.02
22	21.00	23.10	26.85	28.02
23	22.00	24.10	27.85	29.02
24	23.00	25.10	28.85	30.02

JUSUN 鉅赛实业(深圳)有限公司
 JUSAI INDUSTRIAL (SHENZHEN) CO.,LTD

PART NO.: 1.0S-10X-nPWB
 CIS PART NO.:

L ±	L' ±	MAT'L	APPD:	DATE	VERSION
.I ± 0.1	.I' ± 0.1'	/		2016.11.21	VI.0
.X ± 0.05	.X' ± 0.05'	FINISH	CHRD:	SCALE 1:1	SHEET 1/1
.XX ±	.XX' ±	UNITS: mm	DR:	REV. XI	