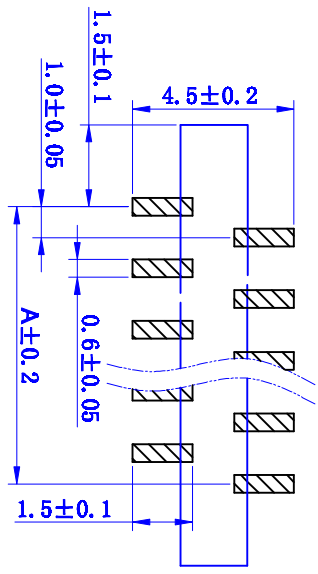
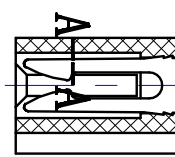
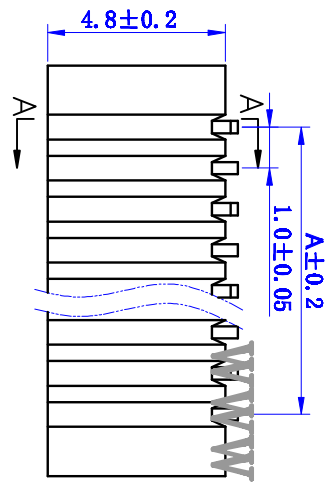
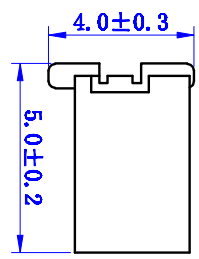
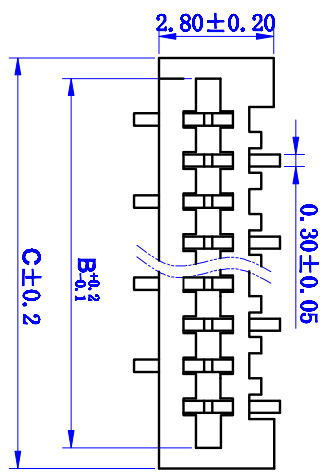


REV	DESCRIPTION	DATE
X1	Client edition	



PCB Layout

- 技术要求:**
- 零件表面要求平整光滑,无明显盲孔、划痕、油污、缩水、缺料、毛边、变形或针位倾斜等。
 - 规格: 额定电流: 0.5A, AC, DC; 额定电压: 50V, AC, DC; 工作温度: -25℃~+85℃; 耐压值: 500V, AC/min; 接触电阻: 30mΩ/Max; 绝缘电阻: 500MΩ/Min; 零件: PA46/LCP UL94V-0 插针: 磷青铜镀锡。
 - 材质:

孔位	A	B	C
4	3.00	5.10	6.00
5	4.00	6.10	7.00
6	5.00	7.10	8.00
7	6.00	8.10	9.00
8	7.00	9.10	10.00
9	8.00	10.10	11.00
10	9.00	11.10	12.00
11	10.00	12.10	13.00
12	11.00	13.10	14.00
13	12.00	14.10	15.00
14	13.00	15.10	16.00
15	14.00	16.10	17.00
16	15.00	17.10	18.00
17	16.00	18.10	19.00
18	17.00	19.10	20.00
19	18.00	20.10	21.00
20	19.00	21.10	22.00
21	20.00	22.10	23.00
22	21.00	23.10	24.00
23	22.00	24.10	25.00
24	23.00	25.10	26.00
25	24.00	26.10	27.00
26	25.00	27.10	28.00
27	26.00	28.10	29.00
28	27.00	29.10	30.00
29	28.00	30.10	31.00
30	29.00	31.10	32.00
31	30.00	32.10	33.00
32	31.00	33.10	34.00

JUSUN 钜赛实业(深圳)有限公司
JUSAI INDUSTRIAL (SHENZHEN) CO.,LTD

TITLE: 1.0-2B3-nPB
PART NO.:

L ±	L' ±	MAT'L	USE:	APPD:	DRG NO.:	SCALE	SHEET	REV.
.X ± 0.25	.X' ±					1:1	1/1	X1
.XX ± 0.10	.XX' ±	FINISH						
.XXX ±	.XXX' ±		CHGD:					
Ø	UNITS: mm	QTY	DR:					