

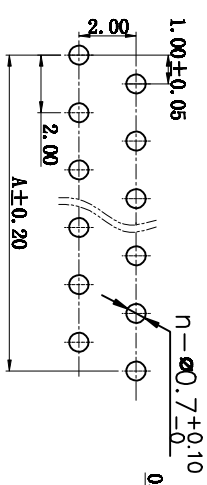
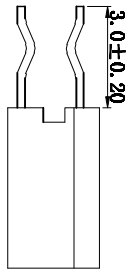
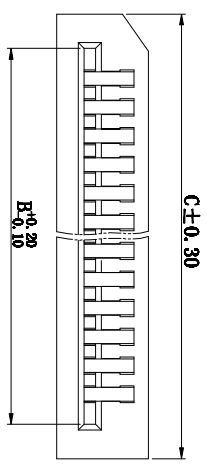
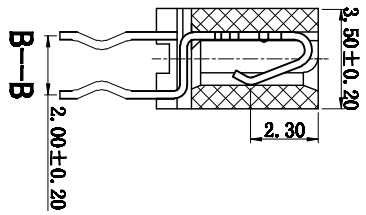
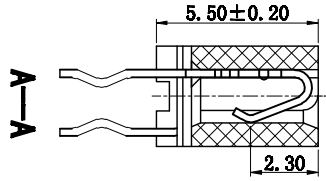
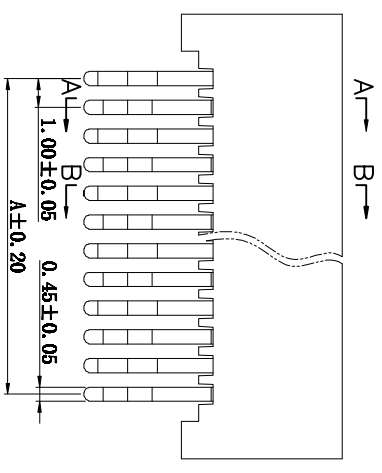
REV	DESCRIPTION	MARK
XI	first edition	

孔位	A	B	C
4	3.00	5.10	7.20
5	4.00	6.10	8.20
6	5.00	7.10	9.20
7	6.00	8.10	10.20
8	7.00	9.10	11.20
9	8.00	10.10	12.20
10	9.00	11.10	13.20
11	10.00	12.10	14.20
12	11.00	13.10	15.20
13	12.00	14.10	16.20
14	13.00	15.10	17.20
15	14.00	16.10	18.20
16	15.00	17.10	19.20
17	16.00	18.10	20.20
18	17.00	19.10	21.20
19	18.00	20.10	22.20
20	19.00	21.10	23.20
21	20.00	22.10	24.20
22	21.00	23.10	25.20
23	22.00	24.10	26.20
24	23.00	25.10	27.20
25	24.00	26.10	28.20
26	25.00	27.10	29.20
27	26.00	28.10	30.20
28	27.00	29.10	31.20
29	28.00	30.10	32.20
30	29.00	31.10	33.20
31	30.00	32.10	34.20
32	31.00	33.10	35.20
33	32.00	34.10	36.20
34	33.00	35.10	37.20
35	34.00	36.10	38.20
36	35.00	37.10	39.20
37	36.00	38.10	40.20
38	37.00	39.10	41.20
39	38.00	40.10	42.20
40	39.00	41.10	43.20

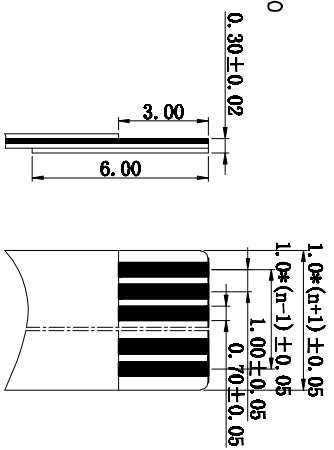
www.szjusun.cn

性能:

- 额定电流: 0.5A
- 额定电压: 50V AC, DC
- 耐电压: 500V
- 接触电阻: 20mΩ
- 绝缘电阻: 800MΩ
- 工作温度: -20℃~+85℃
- 塑件 (材质): PA46, UL94V-0
- 插簧 (材质): 磷青铜, 镀锡



PCB Layout  
未注公差: ±0.05mm



适用扁平电缆  
Proper cable

JUSUN 巨赛实业(深圳)有限公司  
JUSAI INDUSTRIAL (SHENZHEN) CO.,LTD

PART NO.: 1.0-11-nP  
CIS PART NO.:

L ±	L' ±	MAT'L	APPD:	DATE	VERSION
.I ± 0.20	.I' ± 0.1'	/		2016.09.02	VI.0
.XII ± 0.10	.XII' ± 0.05'	FINISH	CHGD:	SCALE	SHEET
.XIII ±	.XIII' ±	/	DR:	1:1	1/1
UNIT: mm	UNIT: mm	Q'TY		REV.	XI