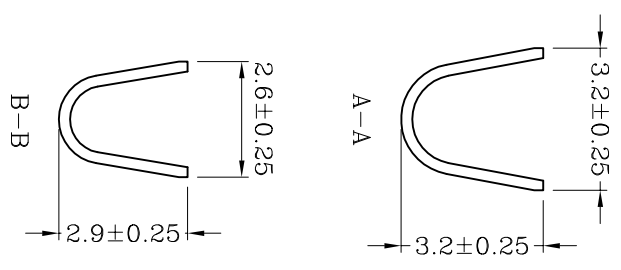


NOTES:

1. Dimensions to be checked by QC.
2. Along any portion of strip, Allowable camber is 0.04mm max. Per 1000mm Length. And allowable twist is 45° max. Per 1000mm Length.
3. All corners and radii have a maximum radius of 0.1mm unless specified.
4. Material: Phosphor Bronze C5191R-H T=0.25mm



		GENERAL TOLERANCE		SCALE: 6:1		DRAWN:		DATE:		DWG. NO. :		TITLE:		REV.	
XX	±0.25	XXX	±0.40	UNIT:	mm	CHECK:		DATE:		E:\DWG\Production\		端子图		A	
X	±0.20	XXX	±0.05	SIZE:	A4	APPROVE:		DATE:		PARTS NO. :	大四P-T2	1/1			
X	±0.15	X°	± 2°												
.XX	±0.08	X°	± 1°												

恒泰实业(深圳)有限公司
 JUSAI INDUSTRIAL (SHENZHEN) CO.,LTD