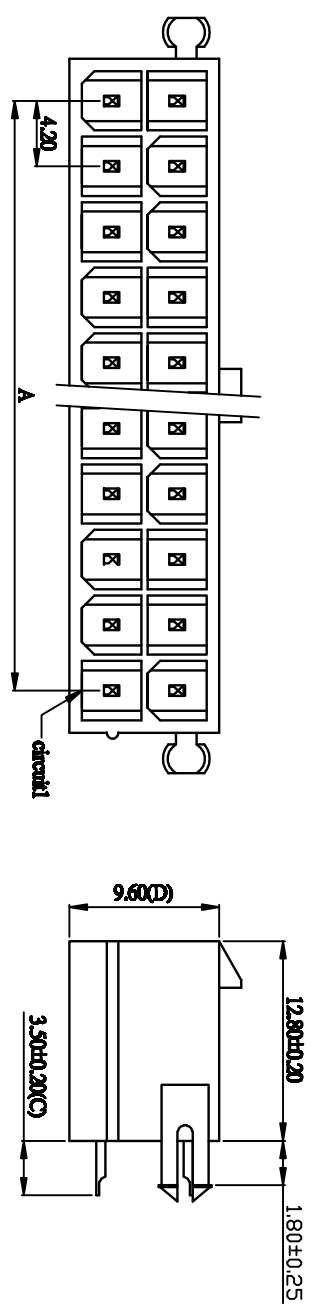


| REV | DESCRIPTION | MARK |
|-----|---------------|------|
| X1 | First edition | |



技术参数 SPECIFICATIONS

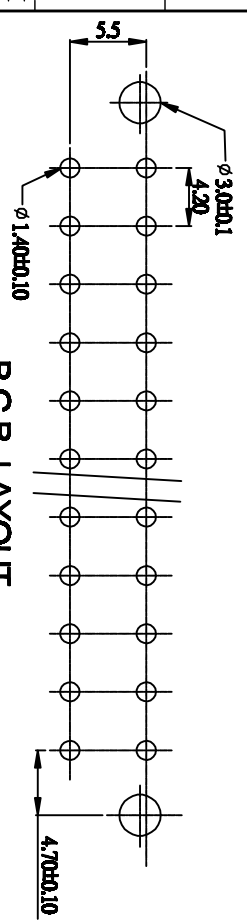
- ◆ 间距: 4.2 Pitch: 4.2
- ◆ 适用线规: AWG#28~#22
Applicable Wire: AWG#28~#22
- ◆ 额定电压: AC, DC, 250V (有效值)
Voltage rating: AC, DC, 250V (rms)
- ◆ 额定电流: 5.0A
Current rating: 5.0A
- ◆ 耐压值: 1500V AC/minute
Withstand voltage: 1500V AC/minute
- ◆ 工作温度: -25℃~+85℃
Working Temperature: -25℃~+85℃
- ◆ 绝缘电阻: >1000 MΩ
Insulation resistance: >1000MΩ
- ◆ 接触电阻: < 0.015 Ω
Contact resistance: < 0.015 Ω

材料 MATERIAL

- ◆ 绝缘座: 尼龍 UL94-0
Housing: Nylon UL94-0
- ◆ 插针: 黄铜
Pin: Brass

| Poles | 尺寸 (mm) | |
|-------|---------|------|
| | A | B |
| 2X1 | 4.2 | 5.4 |
| 2X2 | 8.4 | 9.6 |
| 2X3 | 12.6 | 13.8 |
| 2X4 | 16.8 | 18.0 |
| 2X5 | 21.0 | 22.2 |
| 2X6 | 25.2 | 26.4 |
| 2X7 | 29.4 | 30.6 |
| 2X8 | 33.6 | 34.8 |
| 2X9 | 37.8 | 39.0 |
| 2X10 | 42.0 | 43.2 |
| 2X11 | 46.2 | 47.4 |
| 2X12 | 50.4 | 51.6 |

P.C.B. LAYOUT



| | | |
|--|--|---|
| 巨赛实业(深圳)有限公司 JUSUN INDUSTRIAL (SHENZHEN) CO.,LTD | | PART NO.: 5557-2X1A带定位柱 |
| X ± X ± 0.1 XX ± 0.05 XXX ± | X ± X ± 0.1° XX ± 0.05° XXX ± | APPD: FINISH CHKD: DATE 2016.03.20 |
| UNITS: mm | Q'TY DR: | CUS PART NO.: VERSION VI.0 |
| SCALE 1/1 | | SHEET 1/1 |
| | | REV. X1 |