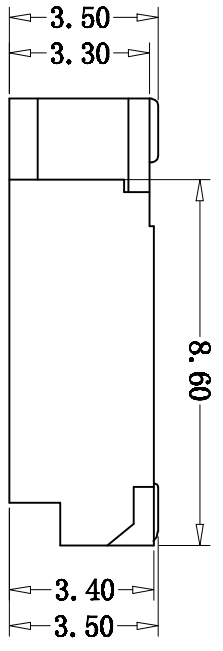
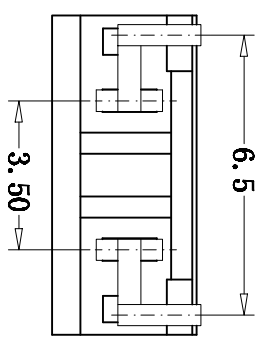
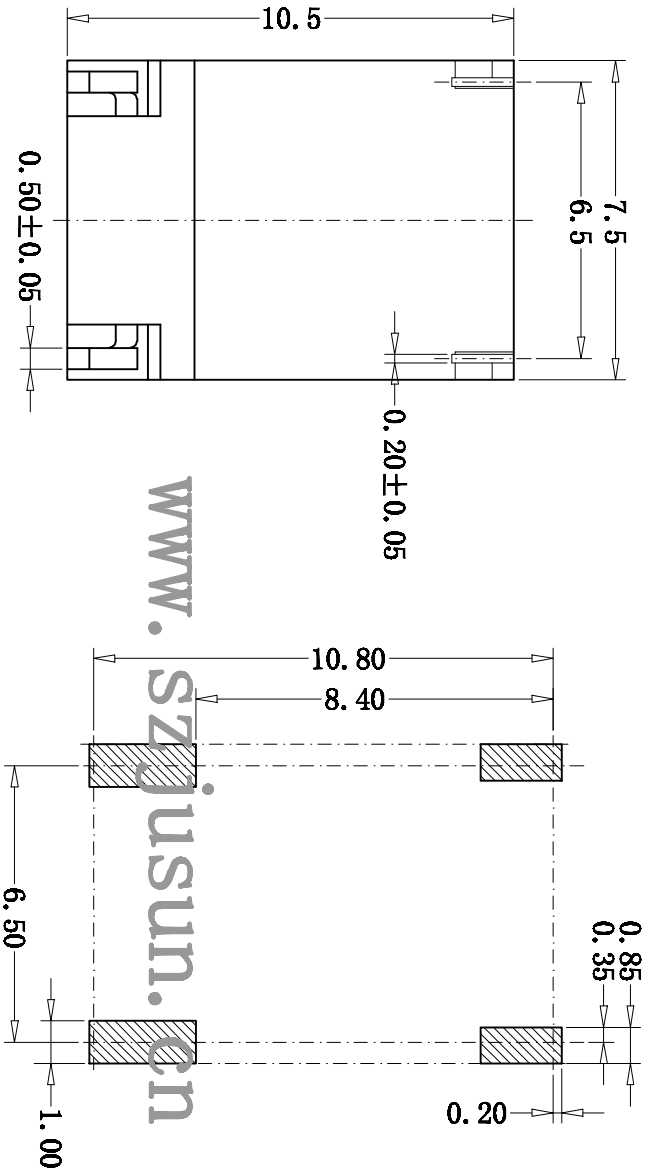


REV	DESCRIPTION	MARK
XI	first edition	



Recommand PCB Layout

**SPECIFICATIONS**

- Voltage rating: 1400V AC, DC
- Current rating: 1A, AC, DC(AWG#24)
- Withstanding Voltage: 3800V AC/minute
- Insulation resistance: 1000MΩ min
- Temperature range: -25°C - +85°C
- Contact resistance: 20mΩ

**HEADER**

- Poles: 2
- Material: Contact: Phos. Bronze, Tin plated
- Base: Nylon 6T, UL94V-0
- Q'TY: 1500 pcs/reel

<b>钰赛实业(深圳)有限公司</b> JUSAI INDUSTRIAL (SHENZHEN) CO.,LTD		<b>TITLE:</b> BHS3-5-2AWB	
<b>PART NO.:</b>	<b>USE:</b>	<b>APPD:</b>	<b>DR:</b>
<b>FINISH:</b>	<b>CHKD:</b>	<b>SCALE:</b> 1:1	<b>SHEET:</b> 1/1
<b>UNITS:</b>	<b>Q'TY:</b>	<b>REV.:</b> XI	

www.szjusun.cn