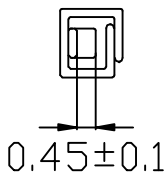
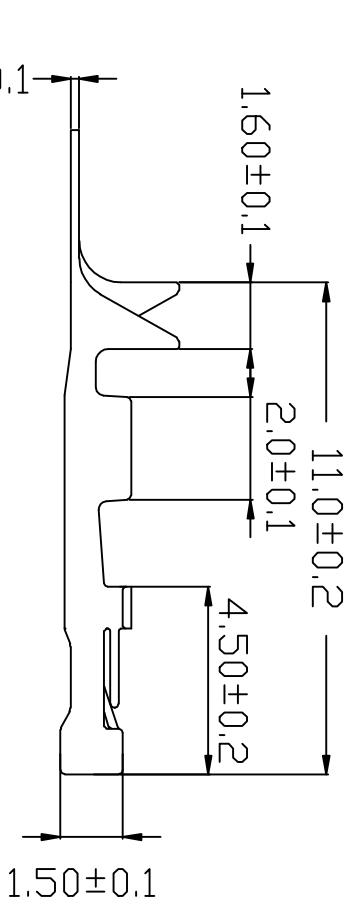
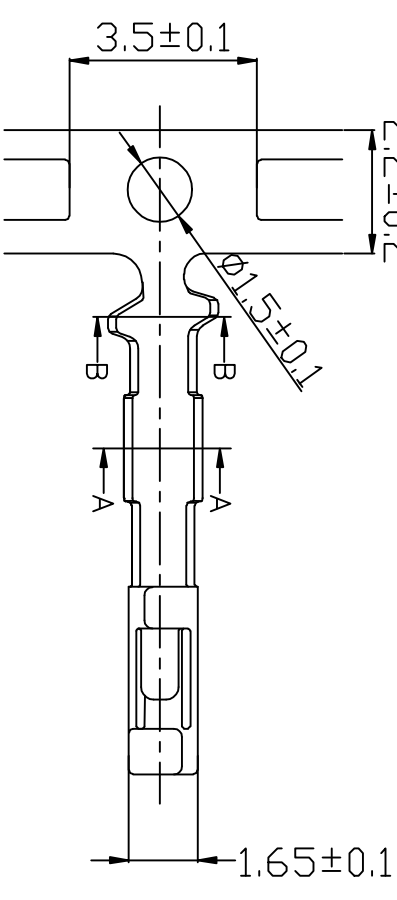


REV	DESCRIPTION	MARK
X1	first edition	



www.szjusun.cn



Section A-A

Section B-B

技术要求:

1. 端子表面无损伤, 无毛刺变形、镀层光洁、目视切面没有纹点、无明显划痕、斑点花纹等。
2. 规格: 额定电压: 250VDC/AC; 额定电流: 3.0A/Max; 耐压值: 1000VAC; 工作温度: -40℃~+105℃; 接触电阻: 20mΩ/Max; 绝缘电阻: 1000MΩ;
3. 材质: 端子: 黄铜 镀锡

巨赛实业(深圳)有限公司 JUSAI INDUSTRIAL (SHENZHEN) CO.,LTD		PART NO.: 杜邦2.54-TER	
X ±	X' ±	MAT'L	APP'D:
X ± 0.20	X' ± 0.1*	FINISH	CHK'D:
XX ± 0.10	XX' ± 0.05*		
XXX ±	XXX' ±	Q'TY	DR:
UNIT'S: mm			
DATE 2017.12.20		VERSION V1.0	
SCALE 1/1	SHEET 1/1	REV. X1	