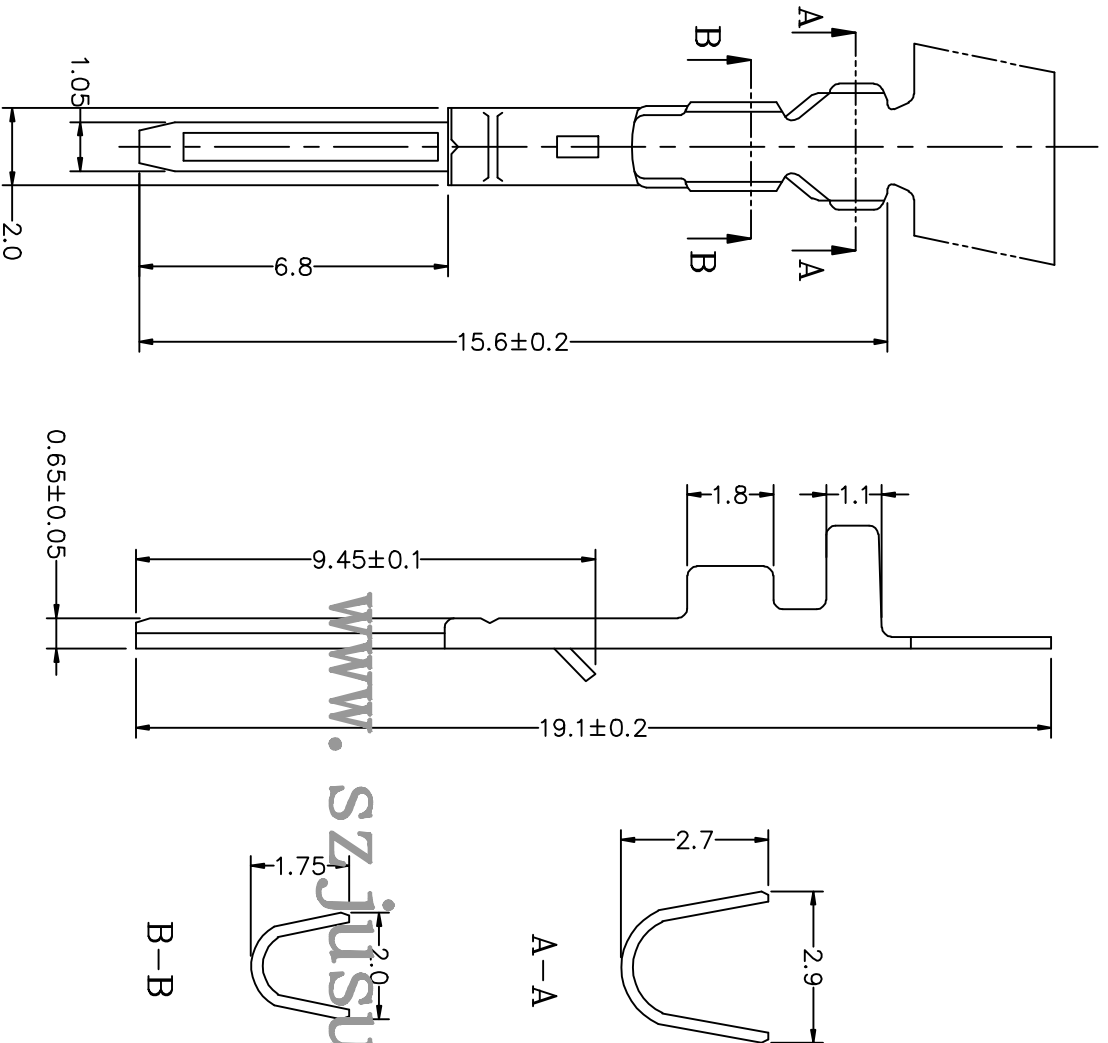


技术参数 SPECIFICATIONS

- ◆ 间距: 2.5 Pitch: 2.5
 - ◆ 适用线规: AWG#28~#22
Applicable Wire: AWG#28~#22
 - ◆ 额定电压: AC, DC, 250V
Voltage rating: AC, DC, 250V
 - ◆ 额定电流: 3.0A
Current rating: 3.0A
 - ◆ 耐压值: 1000V AC/minute
Withstand voltage: 1000V AC/minute
 - ◆ 工作温度: $-25^{\circ}\text{C}^{\sim}+85^{\circ}\text{C}$
Working Temperature: $-25^{\circ}\text{C}^{\sim}+85^{\circ}\text{C}$
 - ◆ 绝缘电阻: $> 1000\text{M}\Omega$
Insulation resistance: $> 1000\text{M}\Omega$
 - ◆ 接触电阻: $< 0.02\ \Omega$
Contact resistance: $< 0.02\ \Omega$
 - ◆ 适用印制板厚度: 1.6 mm
Applicable PC board thickness: 1.6 mm
- 材料 MATERIAL**
- ◆ 绝缘座: 尼龍 UL94-0
Housing: Nylon UL94-0
 - ◆ 端子: 磷青铜
Terminal: Phosphor bronze



www.szjusun.cn

		GENERAL TOLERANCE		SCALE	DRAWN	DATE	DWG. NO.	TITLE	REV.
		XX: ± 0.40	XXX: \pm	1=1	CHECK	DATE	G:\DWG\Production\SM-T.DWG	端子图	A
X: ± 0.25	.XXX \pm	UNIT	CHECK	DATE	PARTS NO.				SHEET
.X ± 0.15	X' $\pm 2^{\circ}$	SIZE	APPROVE	DATE	SM-T1			1/1	
.XX ± 0.10	X' $\pm 1^{\circ}$	MM							