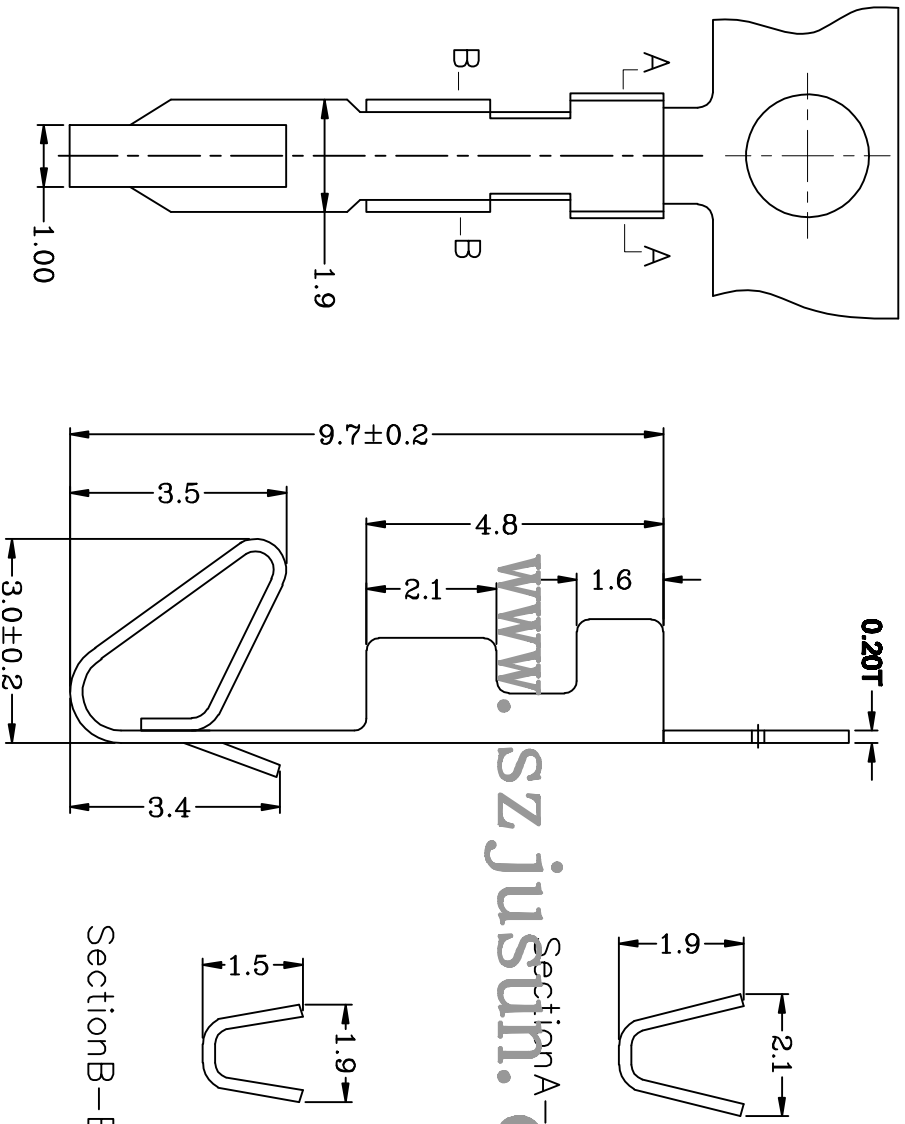
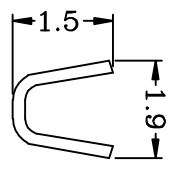


| REV | DESCRIPTION | MARK |
|-----|---------------|------|
| XI | First edition | |

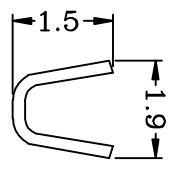
- Notes:**
- MATERIAL:** PHOSPHOR BRONZE, JIS C5191H, HV 200° ±5°
 - Along any Portion of strip, Max Allowable Camber Its 0.04mm Per 1000mm Length . And MAX . Allowable Twist is 45° Per 1000mm Length.
 - All Corners and Radll have a maximum Radius of 0.1mm unless Otherwise Specified.



Section A-A



Section B-B



| | | | |
|------------------------------------------------------------|----------------------------------------------------|---------------------------------------------------|-------------------------|
| 钜赛实业(深圳)有限公司 JUSAI INDUSTRIAL (SHENZHEN) CO.,LTD | | PART NO.: 2510-TER CIS PART NO.: | |
| 尺寸 .X ± 0.05 .XX ± 0.10 .XXX ± | 公差 .X' ± 0.1' .XX' ± 0.05' .XXX' ± | MAT'L / | FINISH / |
| UNIT'S: | DR: | DATE 2016. 04. 20 | VERSION VI. 0 |
| SCALE 1:1 | SHEET 1/1 | REV. XI | |