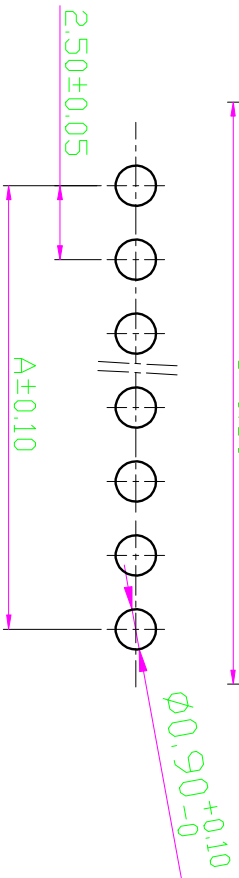
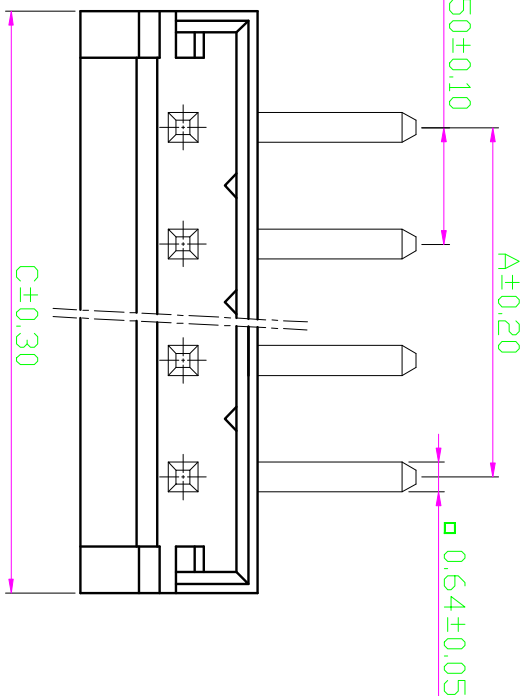
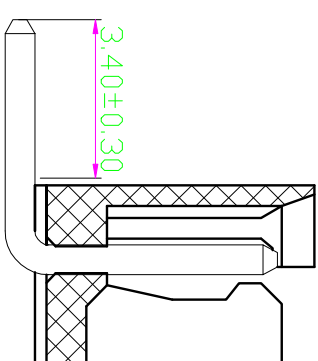
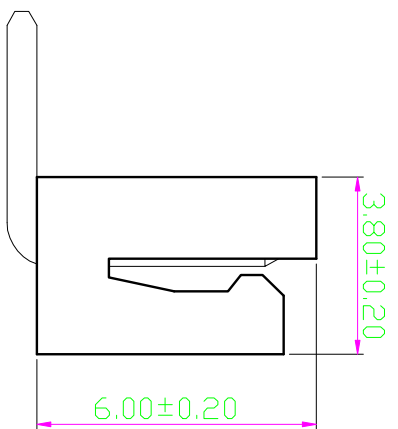
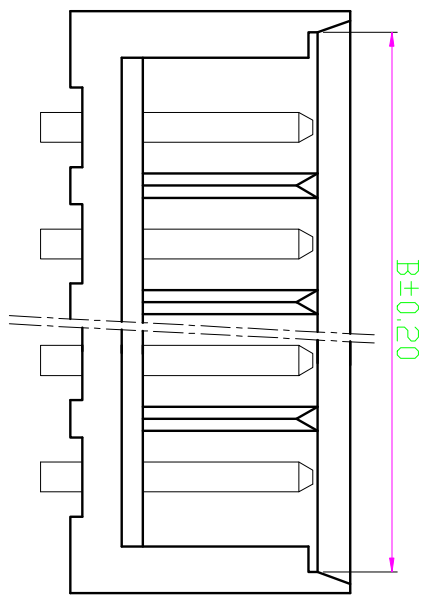


REV	DESCRIPTION	MARK
X1	first edition	



PCB Layout

性能:

- 额定电流: 3.0A
- 额定电压: 250V
- 耐电压: 1000V
- 接触电阻: 30mΩ
- 绝缘电阻: 1000MΩ
- 工作温度: -40℃~+85℃
- 塑件 (材质): PA66
- 插针 (材质): 黄铜, 镀锡

孔数	A	B	C
2	7.50	2.50	6.74
3	10.00	5.00	9.24
4	12.50	7.50	11.74
5	15.00	10.00	14.24
6	17.50	12.50	16.74
7	20.00	15.00	19.24
8	22.50	17.50	21.74
9	25.00	20.00	24.24
10	27.50	22.50	26.74
11	30.00	25.00	29.24
12	32.50	27.50	31.74
13	35.00	30.00	34.24
14	37.50	32.50	36.74
15	40.00	35.00	39.24

巨赛实业(深圳)有限公司 JUSAI INDUSTRIAL (SHENZHEN) CO.,LTD		PART NO.: EH-1AW CUS PART NO.:
X ± X ± 0.1 XX ± 0.05 XXX ±	MAT'L FINISH UNITS: mm	APPD: CHKD: Q'TY DR:
X ± 0.1 XX ± 0.05 XXX ±	X ± 0.1 XX ± 0.05 XXX ±	DATE: 2017.03.30 SCALE: 1:1 SHEET: 1/1 VERSION: VI.0 REV: X1