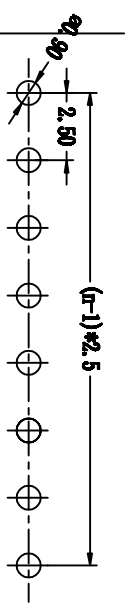
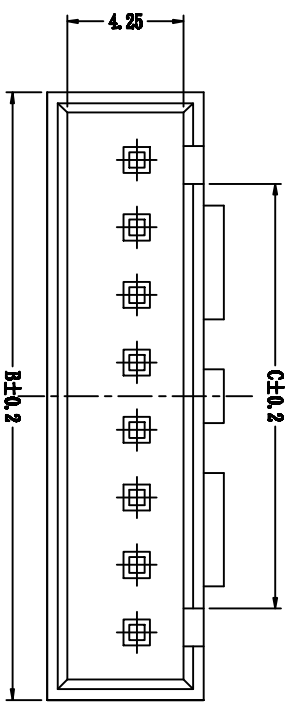
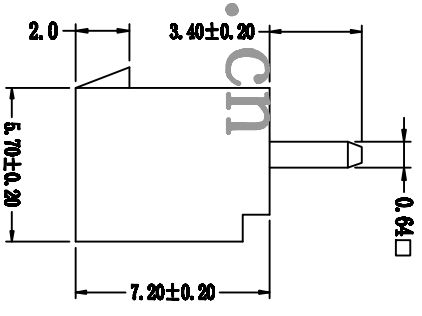
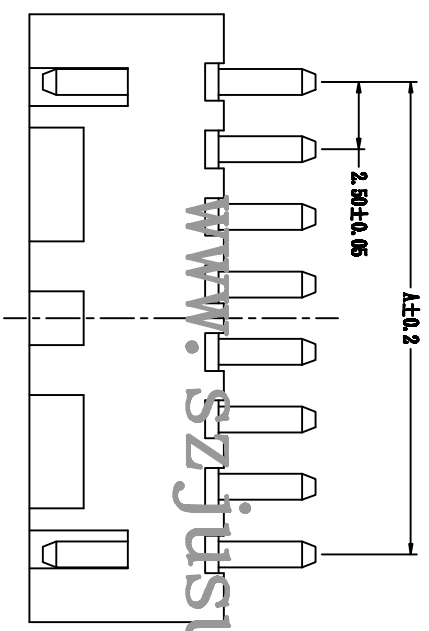


REV	DESCRIPTION	DATE
XI	First edition	

Poles	A	B	C
2A	2.5	7.5	4.00
3A	5.0	10.0	3.30
4A	7.5	12.5	5.72
5A	10.0	15.0	8.22
6A	12.5	17.5	10.72
7A	15.0	20.0	13.22
8A	17.5	22.5	15.72
9A	20.0	25.0	18.22
10A	22.5	27.5	20.72
11A	25.0	30.0	23.22
12A	27.5	32.5	25.72
13A	30.0	35.0	28.22
14A	32.5	37.5	30.72
15A	35.0	40.0	33.72
16A	37.5	42.5	35.72



**SPECIFICATIONS**

- Voltage rating: 250V AC,DC
  - Current rating: 3A,AC,DC
  - Withstanding Voltage: 1000V AC/minute
  - Insulation resistance:1000MΩmin
  - Temperature range:-25°C - +85°C (including temperature rise in applying electrical current)
  - Contact resistance: 30mΩ max
- WAFER**
- Poles: 2-16
  - Material: Nylon 66, UL94V-0
  - Brass Tin-plating
  - Q'TY: 1000 pcs/bag

**JUSUN** 矩赛实业(深圳)有限公司  
JUSAI INDUSTRIAL (SHENZHEN) CO.,LTD

**TITLE:** XHS-1A  
**PART NO.:**

L ±	L' ±	MAT'L	USE:	PART NO.:
.I ± 0.3	.I' ±	FINISH	APPD:	DWG NO.:
.X ± 0.1	.X' ±		CERD:	SCALE 1:1
.XX ±	.XX' ±	Q'TY	DR:	SHEET 1/1
UNITS: mm				REV. XI

