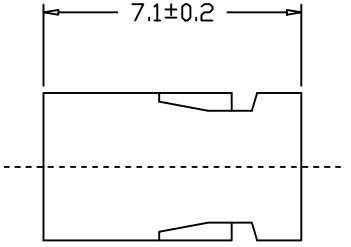
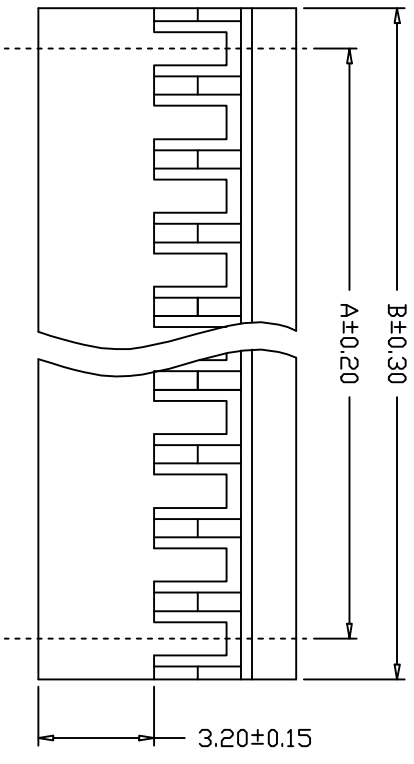
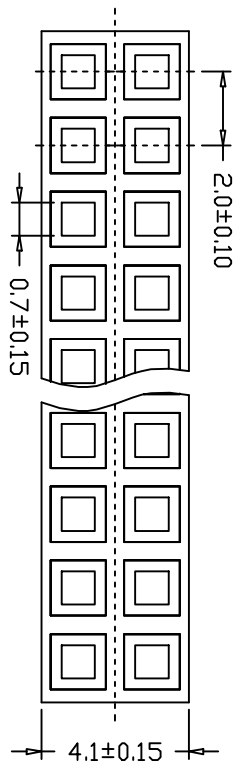


REV	DESCRIPTION	MARK
X1	First edition	

■ SPECIFICATIONS

- Current rating: 1A AC/DC
 - Withstanding Voltage: 500V AC/minute
 - Insulation resistance: 5,000MΩmin
 - Temperature range: -40°C - +105°C
 - Contact Resistance: 20mΩmax
- HOUSING
- Poles: 2x2-20x2
 - Material: UL94V-2, PBT+15% Glass Fiber
 - QTY: 1,000 pcs/Tape & bag



www.szjusun.cn

Dimensions(mm)	
A	B
2.00	4.20
4.00	6.20
6.00	8.20
8.00	10.20
10.00	12.20
12.00	14.20
14.00	16.20
16.00	18.20
18.00	20.20
20.00	22.20
22.00	24.20
24.00	26.20
26.00	28.20
28.00	30.20
30.00	32.20
32.00	34.20
34.00	36.20
36.00	38.20
38.00	40.20

巨赛实业(深圳)有限公司 JUSUN INDUSTRIAL (SHENZHEN) CO.,LTD		PART NO.: 杜邦2.0-2pin
X ± X ± 0.20 XX ± 0.10 XXX ±	X' ± X' ± 0.1' XX' ± 0.05' XXX' ±	MAT'L APP'D: FINISH CHK'D: Q'TY DR:
	UNITS: mm	CUS PART NO.: DATE 2017.11.24 SCALE 1:1
		VERSION V1.0 SHEET 1/1 REV. X1