

REV	DESCRIPTION	DATE
XI	First edition	

尺寸	Pin数	2P	3P	4P	5P	6P	7P	8P	9P	10P	11P	12P	13P	14P	15P	15P
A	1.50	3.00	4.50	6.00	7.50	9.00	10.50	12.00	13.50	15.00	16.50	18.00	19.50	21.00	22.50	22.50
B	3.60	5.10	6.60	8.10	9.60	11.10	12.60	14.10	15.60	17.10	18.60	20.10	21.60	23.10	24.60	24.60
C	2.80	4.30	5.80	7.30	8.80	10.30	11.80	13.30	14.80	16.30	17.80	19.30	20.80	22.30	23.80	23.80
D	6.00	7.50	9.00	10.50	12.00	13.50	15.00	16.50	18.00	19.50	21.00	22.50	24.00	25.50	27.00	27.00

技术参数 SPECIFICATIONS

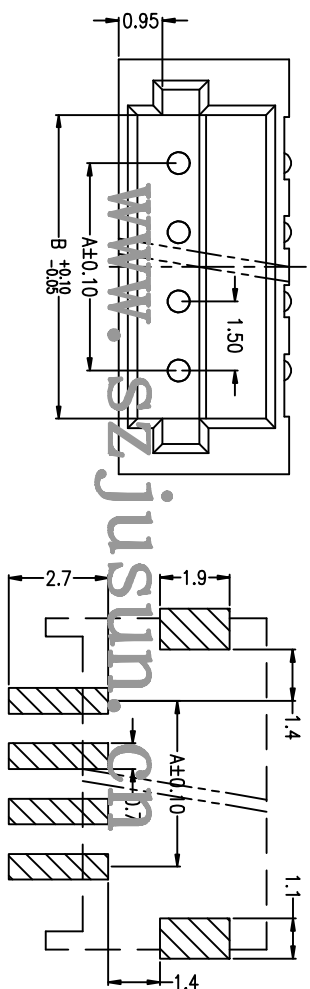
- ◆ 板数: 2-15 Pcb: 2-16
- ◆ 适用线规: AWG#32-#28
Applicable: AWG#32-#28
- ◆ 额定电压: AC/DC 50V(有效值)
Voltage rating: AC/DC 50V(rms)
- ◆ 额定电流: 1.0A, AC/DC
Current rating: 1.0A, AC/DC
- ◆ 耐压值: 500V AC/minute
Withstand voltage: 500V AC/minute
- ◆ 工作温度: -25°C~+85°C
Working Temperature: -25°C~+85°C
- ◆ 绝缘电阻: >500 ohm
Insulation resistance: >500 ohm
- ◆ 接触电阻: <0.02 oh
Contact resistance: <0.02 oh

材料 MATERIAL

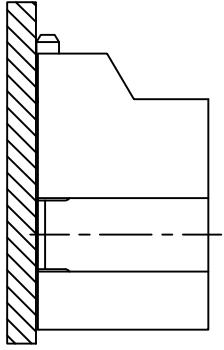
- ◆ 插针: 黄铜 (PIN: Brass)
- ◆ A型: PA46 (Welder: PA46)

包装方式 PACKAGE

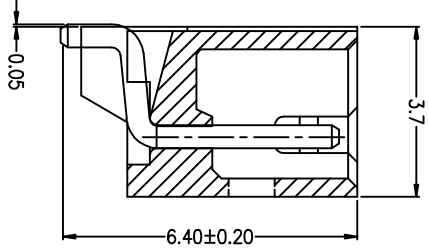
- ◆ 缩带包装 Tape and Reel Package
- ◆ 管装 Pipe Package
- ◆ 袋装 Bag Package



PCB寸法 (PCB Layout)



安装图: (Assembly Layout)



JUSUN 钜赛实业(深圳)有限公司
JUSAI INDUSTRIAL (SHENZHEN) CO.,LTD

USE: MAT'L
APPD:
CHKD:
DR:

FINISH
SCALE: 1:1

SHEET: 1/1
REV: XI

TITLE: 1.5T-1-NAWB
PART NO.:

