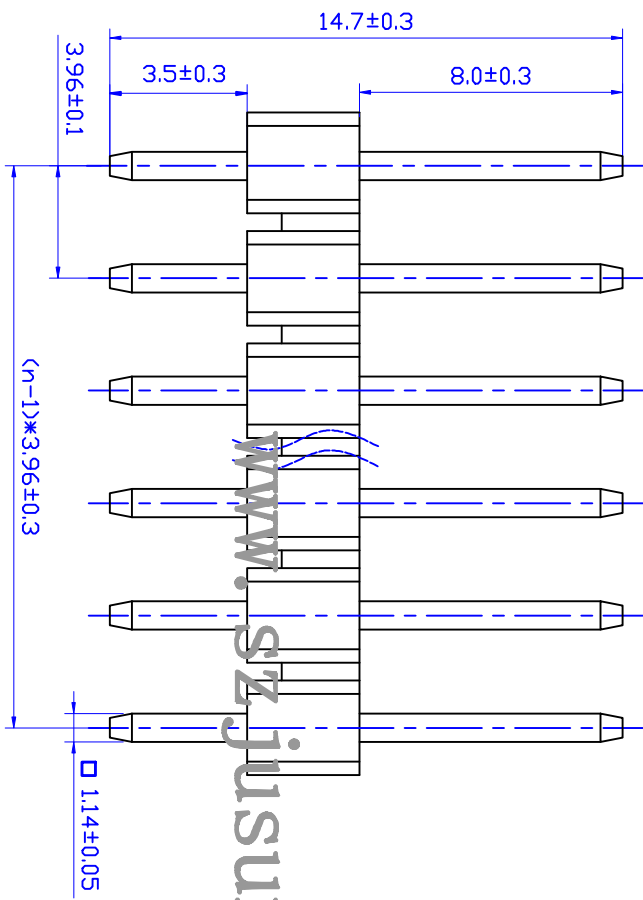
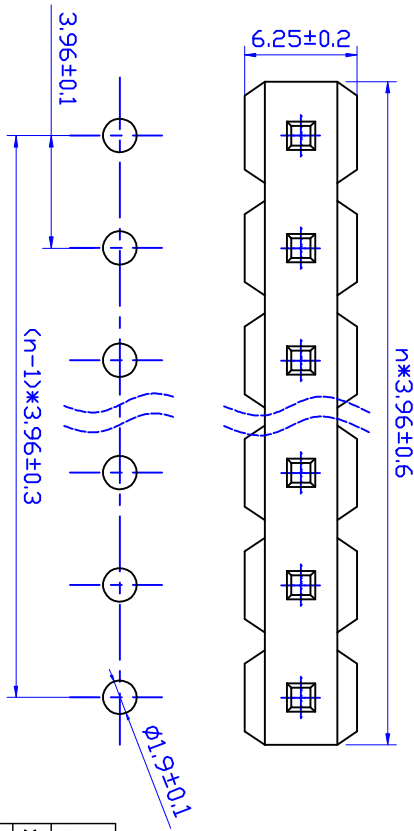
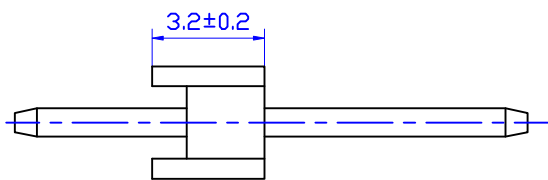


REV	DESCRIPTION	MARK
X1	first edition	



www.szjusun.cn



PCB Layout

技术要求:
 1. 零件表面要求平整光洁无毛刺, 无明显盲孔, 划痕, 麻点, 点花, 油污, 缩水, 毛边, 变形或孔位偏差等;
 2. 规格: 额定电压: 250VDC/AC;
 额定电流: 7.0A;
 耐压值: 1000VAC;
 工作温度: $-40^{\circ}\text{C} \sim +105^{\circ}\text{C}$;
 接触电阻: $20\text{m}\Omega/\text{Max}$;
 绝缘电阻: $800\text{M}\Omega/\text{Min}$;
 3. 材质: 塑胶: PBT UL94V-0 (Black)
 插针: 黄铜 镀底表面镀锡/金.

JUSUN 鉅赛实业(深圳)有限公司 JUSAI INDUSTRIAL (SHENZHEN) CO.,LTD		PART NO.: 杜邦3.96-1X0A L=14.7mm
X ±	X' ±	MAT'L
X ± 0.20	X' ± 0.1'	APPD:
XX ± 0.10	XX' ± 0.05'	FINISH
XXX ±	XXX' ±	CHKD:
UNITS: mm	Q'TY	DR:
SCALE 1/1	SHEET 1/1	REV. X1
DATE 2017.10.28	VERSION V1.0	
CUS PART NO.:		