

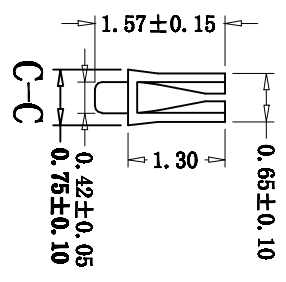
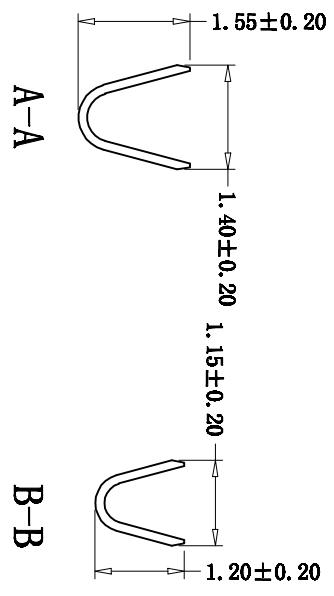
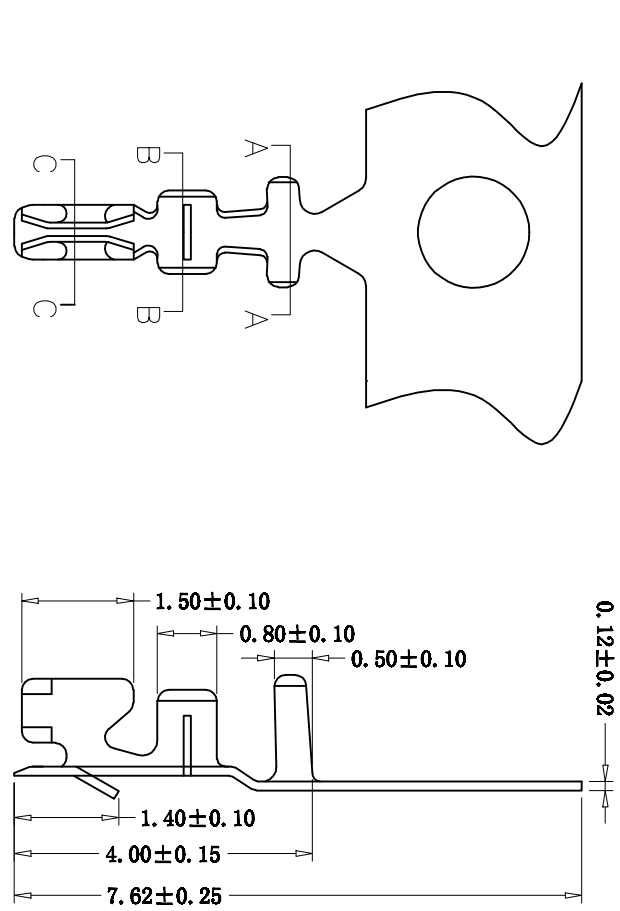
REV	DESCRIPTION	MARK
XI	first edition	

### ■ SPECIFICATIONS

- Voltage rating: 50V AC, DC
- Current rating: 1.0A AC/DC (AWG#28)
- Withstanding Voltage: 500V AC/minute
- Insulation resistance: 100MΩ min
- Temperature range: -25°C - +85°C
- Contact resistance: 20mΩ

### ■ TERMINAL

- Material: Phosphor Bronze tin-Plated.
- Wire Range: AWG#28-#32
- Reel Q'ty: 20,000 pcs/reel



		<b>钜赛实业(深圳)有限公司</b> JUSAI INDUSTRIAL (SHENZHEN) CO.,LTD		<b>TITLE:</b> 1.0T-1-TER	
<b>USE:</b> MAT'L Phosphor bronze		<b>APPD:</b> FINISH Tin Plated		<b>PART NO.:</b>	
<b>CHKD:</b>		<b>DR:</b>		<b>DWG NO.:</b>	
<b>UNITS:</b>		<b>Q'TY</b>		<b>SCALE</b> 1:1	
<b>REV.</b> XI		<b>REV.</b> XI		<b>REV.</b> XI	